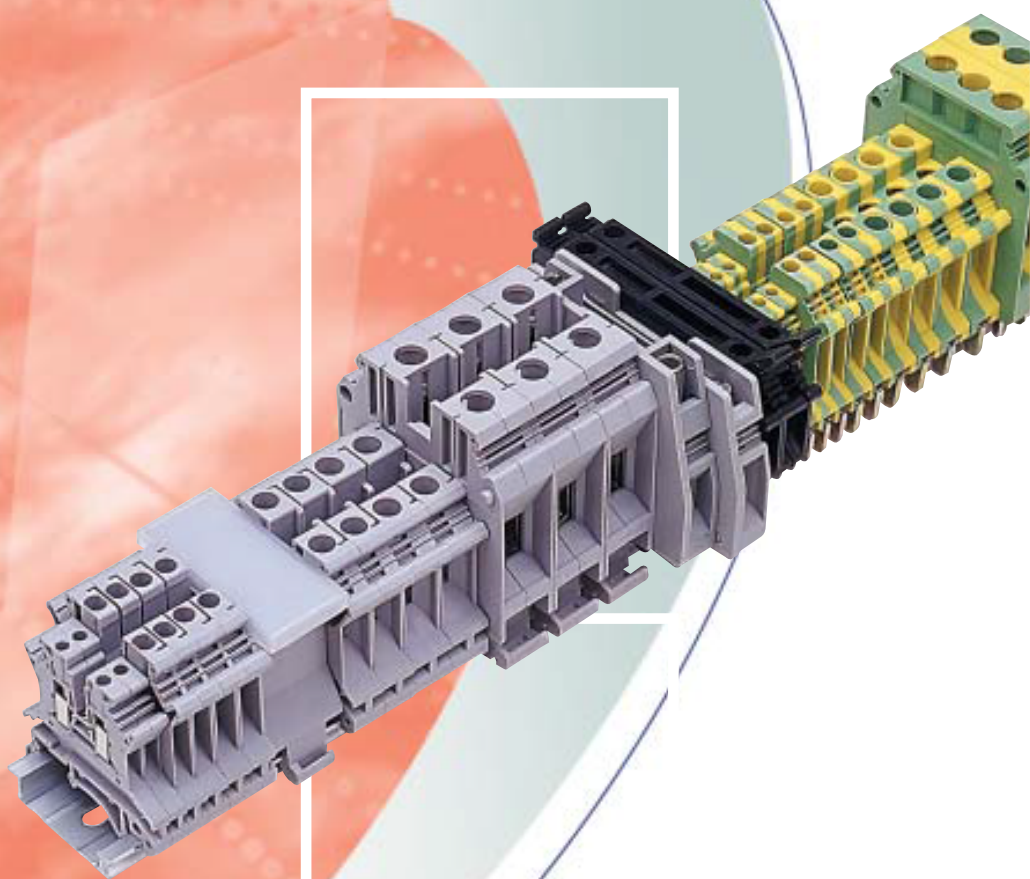


ONELITTER

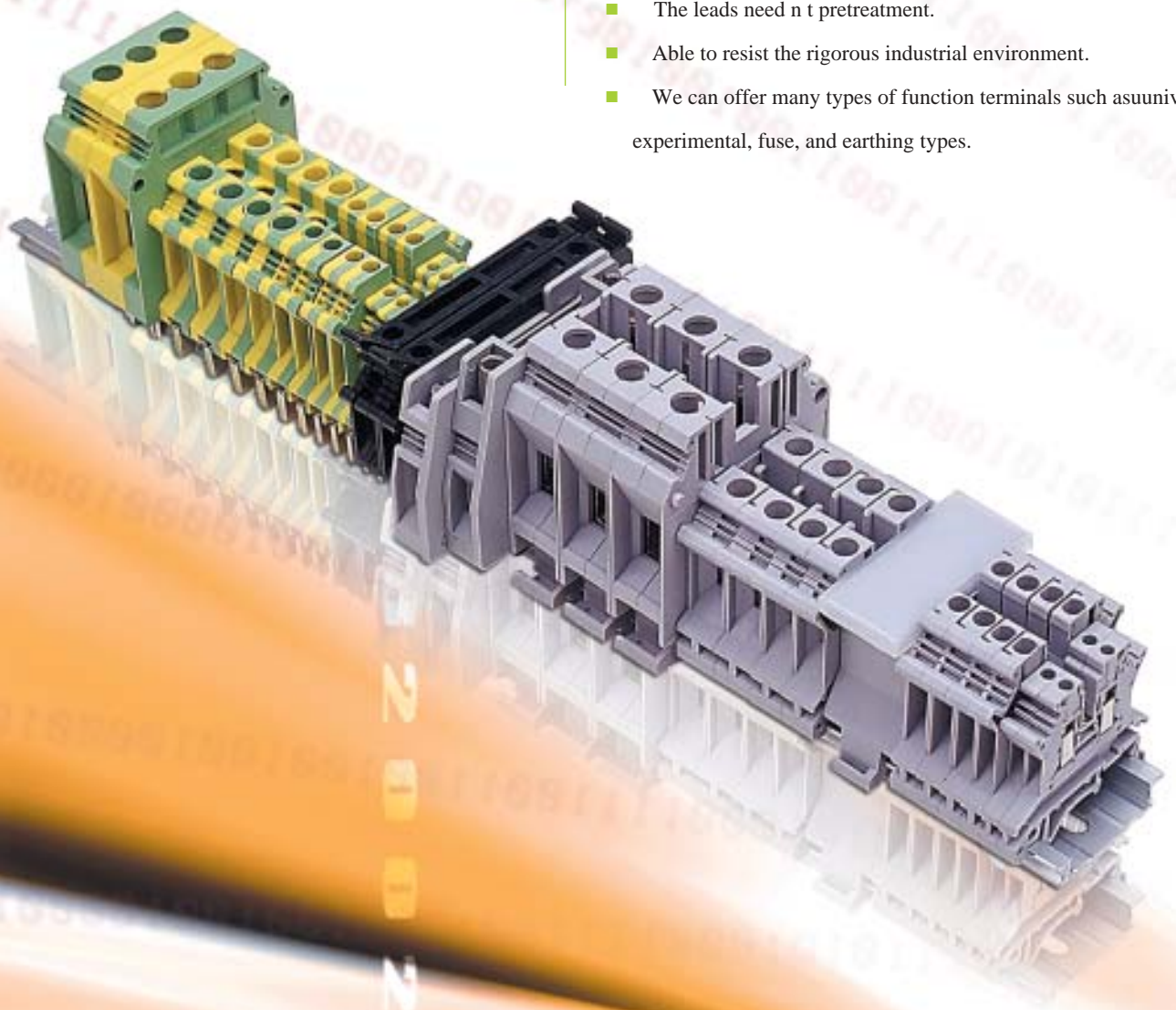
Terminal Block

J42



ONELITTER

- The screw, collecting strip and press frame are separately made of high strength alloy copper, electrolytic copper and copper alloy. The metal surfaces are plated with nickel for protection.
- Self-locking function can prevent the screws from loosening.
- High elastic copper press strip makes the contacts more reliable.
- The cover is made of imported Nylon 66, which has good flexibility and its flame class reaches V0.
- The leads need not pretreatment.
- Able to resist the rigorous industrial environment.
- We can offer many types of function terminals such as universal, experimental, fuse, and earthing types.





Universal Type

Universal terminals can be mounted on both U-type and G-type rails, making leads convenient pass through.



Experimental Type

Experimental terminals can make kinds of test connection of the secondary circuit of current transformer conveniently.



Disconnecting Type

Disconnecting type terminals are widely used in industrial automation field, convenient for users' test and inspection.



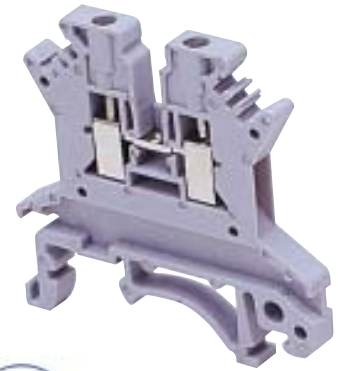
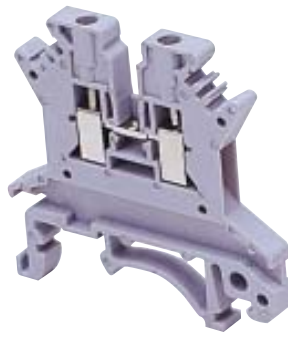
Earthing Type

Earthing type terminals have yellowish green insulation cover of international standard. The metal foot of the ground terminal is connected with in rail electricity. And the rail can be used as the earthing bus.



Fuse Type

Fuse type terminals, in which the fuses can be loaded, can open upward and can be fixed at the end position.



Universal Terminal

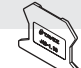
Type	
Terminal dimensions	width/thickness/height (mm)
Rated data	voltage {V}
	current {A}
	section (mm ²)
Pressed wire range	rigid lead (mm ²)
	flexible lead (mm ²)
Nominal screw diameter	
Torque (N, m)	
Stripping length (mm)	


	J42-1.5
Terminal dimensions	42.5/4.2/41
Rated data	500
	17.5
	1.5
Pressed wire range	0.14-1.5
	0.14-1.5
Nominal screw diameter	M2
Torque (N, m)	0.2-0.25
Stripping length (mm)	7

	J42-2.5B
Terminal dimensions	42.5/6.2/41
Rated data	500
	24
	2.5
Pressed wire range	1.0-4
	1.0-2.5
Nominal screw diameter	M3
Torque (N, m)	0.5-0.8
Stripping length (mm)	7

Instructions of accessories


Applicable rail 

Terminal partition 

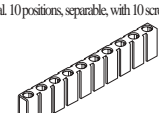
Parting slip
used for isolation between adjacent connecting pieces and can be inserted afterwards 

Block partition
used for isolation and visual separation between the terminal groups

Label number

Normal: 1-100, 10 per group. Please give clear indication if special letters needed.
Blank 
Transversal prints
Longitudinal prints

Center type connecting piece

Used for transversal bridge connection in the center of the terminal. 10 positions, separable, with 10 screws 
2 links
3 links
4 links
10 links

Inserting type connecting piece

2 positions
3 positions
4 positions
10 positions

End fixing



Type

G32-15
TH35-7.5

1.5G

—

ZG

M4
M4/H
M4/S

L2-1.5/4
L3-1.5/4
L4-1.5/4
L10-1.5/4

—

GD

Type

G32-15
TH35-7.5

2.5BG

P2.5B

ZG

M6
M6/H
M6/S

L2-4/6
L3-4/6
L4-4/6
L10-4/6

Q2-4/6
Q3-4/6
Q4-4/6
Q10-4/6

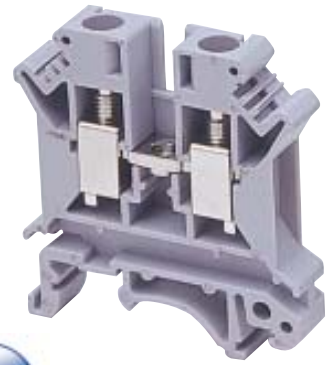
GD



2.5
mm²



4
mm²



6
mm²

J42-2.5

42.5/5.2/46

800

24

2.5

1.0-4

1.0-2.5

M3

0.5-0.8

7

Type

G32-15
TH35-7.5

2.5/10G

P2.5-35

ZG

M5
M5/H
M5/S

L2-2.5/5
L3-2.5/5
L4-2.5/5
L10-2.5/5

Q2-2.5/5
Q3-2.5/5
Q4-2.5/5
Q10-2.5/5

GD

J42-4

42.5/6.2/46

800

32

4

1.5-6

1.5-4

M3

0.5-0.8

8

Type

G32-15
TH35-7.5

2.5/10G

P2.5-35

ZG

M6
M6/H
M6/S

L2-4/6
L3-4/6
L4-4/6
L10-4/6

Q2-4/6
Q3-4/6
Q4-4/6
Q10-4/6

GD

J42-6

42.5/8.2/46

800

41

6

2.5-10

2.5-6

M4

1.5-1.8

10

Type

G32-15
TH35-7.5

2.5/10G

P2.5-35

ZG

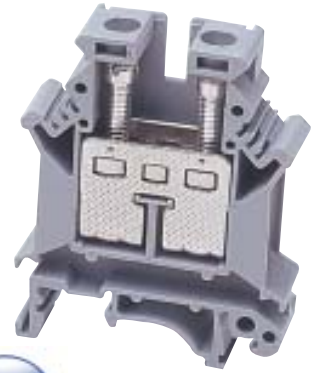
M8
M8/H
M8/S

L2-6/8
L3-6/8
L4-6/8
L10-6/8

Q2-6/8
Q3-6/8
Q4-6/8
Q10-6/8

GD

Universal Terminal



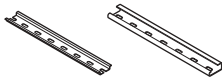
Type	
Terminal dimensions	width/thickness/height (mm)
Rated data	voltage {V}
	current {A}
	section (mm ²)
Pressed wire range	rigid lead (mm ²)
	flexible lead (mm ²)
Nominal screw diameter	
Torque (N, m)	
Stripping length (mm)	

J42-10
42.5/10.2/46
800
57
10
4-16
4-10
M4
1.5-1.8
10

J42-16
42.5/12.2/52.5
800
76
16
6-25
6-16
M4
1.5-1.8
11

Instructions of accessories

Applicable rail



Terminal partition



Parting slip

used for isolation between adjacent connecting pieces and can be inserted afterwards



Block partition

used for isolation and visual separation between the terminal groups

Label number

Normal: 1-100, 10 per group. Please give clear indication if special letters needed

blank

Transversal prints

Longitudinal prints



Center type connecting piece

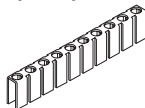
Used for transversal bridge connection in the center of the terminal. 10 positions, separable, with 10 screws

2 links

3 links

4 links

10 links



Inserting type connecting piece

2 positions

3 positions

4 positions

10 positions

End fixing

Type

G32-15
TH35-7.5

2.5/10G

P2.5-35

ZG

M10
M10/H
M10/S

L2-10/10
L3-10/10
L4-10/10
L10-10/10

Q2-10/10
Q3-10/10
Q4-10/10
Q10-10/10

GD

Type

G32-15
TH35-7.5

16G

P2.5-35

ZG

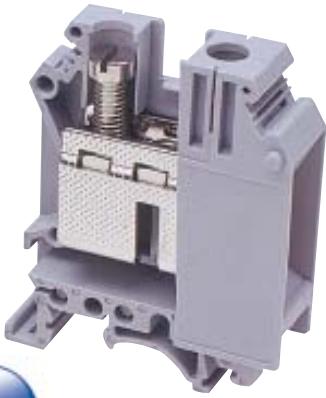
M12
M12/H
M12/S

L2-16/12
L3-16/12
L4-16/12
L10-16/12

Q10-16/12

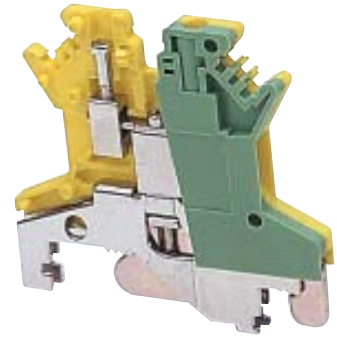
GD





35
mm²

Earthing Terminal



1.5
mm²

J42-35

50.5/15.2/61

1000

125

35

16-50

16-35

M6

3.2-3.7

16

Type

G32-15

TH35-7.5

-

P2.5-35

-

M15

M15/H

M15/S

L2-35/15

L3-35/15

L4-35/15

L10-35/15

Q10-35/15

GD

Type

Terminal dimensions width/thickness/height{mm}

Rated data current {A}

section (mm²)

Pressed wire range rigid lead(mm²)

flexible lead{mm}

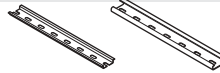
Connecting screw nominal screw diameter

Torque (N, m)

Stripping length (mm)

Instructions of accessories

Applicable rail



Label number

Normal: 1-100, 10 per group. Please give clear indication if special letters needed.

Blank

Transversal prints

Longitudinal prints

End fixing



J42-1.5D

42.5/4.2/40.5

-

1.5

0.14-1.5

0.14-1.5

M2

0.2-0.25

7

Type

G32-15

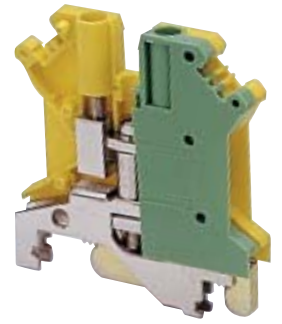
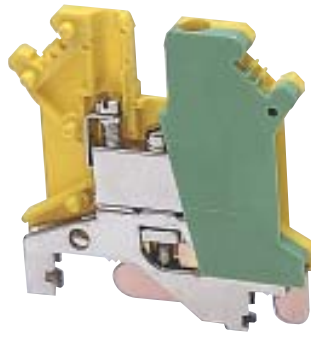
TH35-7.5

M4

M4/H

M4/S

GD



Earthing Terminal



Type	
Terminal dimensions	width/thickness/height {mm}
Rated data	current {A}
	section (mm ²)
Pressed wire range	rigid lead (mm ₂)
	flexible lead (mm ₂)
Connecting screw	nominal screw diameter
	Torque (N, m)
Stripping length(mm)	


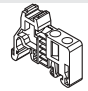
	J42-2.5D
Terminal dimensions	42.5/5.2/46
Rated data	—
	2.5
Pressed wire range	1.0-4
	1.0-2.5
Connecting screw	M3
	0.5-0.8
Stripping length(mm)	7

	J42-4D
Terminal dimensions	42.5/6.2/46.3
Rated data	—
	4
Pressed wire range	1.5-6
	1.5-4
Connecting screw	M3
	0.5-0.8
Stripping length(mm)	8

Instructions of accessories	
Applicable rail	

Type	G32-15 TH35-7.5
------	----------------------------------

Type	G32-15 TH35-7.5
------	----------------------------------

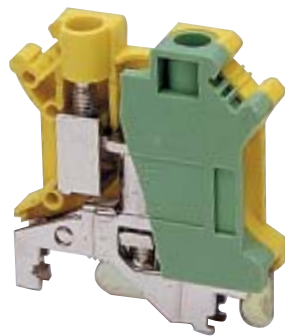
Label number	
Normal: 1-100, 10 per group. Please give clear indication if special letters needed	
Blank	
Transversal prints	
Longitudinal prints	
End fixing	

	M5 M5/H M5/S
	GD

	M6 M6/H M6/S
	GD



6
mm²



10
mm²



16
mm²



35
mm²

J42-6D

42.5/8.2/46.3
—
6
2.5–10
2.5–6
M4
1.5–1.8
10

Type

G32-15
TH35-7.5

M8
M8/H
M8/S

GD

J42-10D

42.5/10.2/46.3
—
10
4–16
4–10
M4
1.5–1.8
10

Type

G32-15
TH35-7.5

M10
M10/H
M10/S

GD

J42-16D

42.5/12.2/52.8
76
16
6–25
6–16
M4
1.5–1.8
11

Type

G32-15
TH35-7.5

M12
M12/H
M12/S

GD

J42-35D

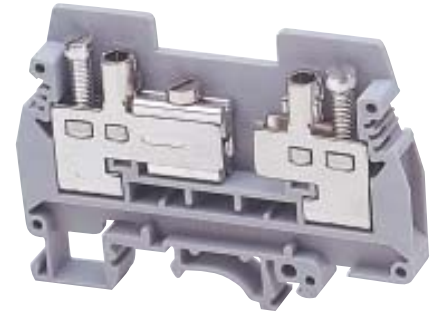
50.2/15.2/61.3
125
35
16–50
16–35
M6
3.2–3.7
15

Type

G32-15
TH35-7.5

M15
M15/H
M15/S

GD



Disconnecting Type Terminal

Experimental Type Terminal

Type	
Terminal dimensions	width/thickness/height{mm}
Rated data	voltage{V}
	current{A}
	section (mm ²)
Pressed wire range	rigid lead (mm ₂)
	flexible lead (mm ₂)
Nominal screw diameter	
Torque (N, m)	
Stripping length(mm)	

Type	J42-2.5K
Terminal dimensions	51/6.2/46
Rated data	500
	16
	2.5
Pressed wire range	0.2-4
	0.2-4
Nominal screw diameter	M3
Torque (N, m)	0.5-0.6
Stripping length(mm)	8

Type	J42-6S
Terminal dimensions	72/8.2/50
Rated data	400
	57
	6/10
Pressed wire range	0.5-10
	0.5-6
Disconnecting slide screw	M3/connecting screwM4
Torque (N, m)	0.6-0.8/1.2-1.5
Stripping length(mm)	13

Instructions of accessories	
Special use terminal	
Applicable rail	

Type	G32-15 TH35-7.5
------	--------------------

Type	G32-15 TH35-7.5
------	--------------------

Terminal partition	
--------------------	--

Terminal partition	-
--------------------	---

Terminal partition	6SG
--------------------	-----

Label number	
Normal: 1-100, 10 per group. Please give clear indication if special letters needed	
Blank	
Transversal prints	
Longitudinal prints	

Label number	M6 M6/H M6/S
--------------	--------------------

Label number	M8 M8/H M8/S
--------------	--------------------

Center type connecting piece	
Used for transversal bridge connection in the center of the terminal. 10 positions, separable, with 10 screws	
2 links	
3 links	
4 links	
10 links	

Center type connecting piece	-
------------------------------	---

Center type connecting piece	L2-6S/8 L3-6S/8 L4-6S/8 L10-6S/8
------------------------------	---

Inserting type connecting piece	
2 positions	
3 positions	
4 positions	
10 positions	

Inserting type connecting piece	Q2-4/6 Q3-4/6 Q4-4/6 Q10-4/6
---------------------------------	---------------------------------------

Inserting type connecting piece	Q2-6/8 Q3-6/8 Q4-6/8 Q10-6/8
---------------------------------	---------------------------------------

Swichable short-circuit piece between two terminals	
used for transversal bridging in the center of terminals, 10 positions, separable, 10 screws	

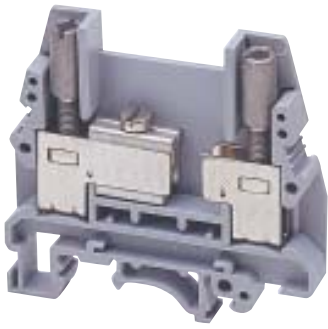
Swichable short-circuit piece between two terminals	-
---	---

Swichable short-circuit piece between two terminals	D10-6S/8
---	----------

End fixing	
------------	--

End fixing	GD
------------	----

End fixing	GD
------------	----



Experimental Type Terminal

J42-6SB
61/8.2/57.5
500
41
6
0.5-10
0.5-6
Disconnecting slide screwM3/connecting screwM4
0.6-0.8/1.5-1.8
10

Type

G32-15
TH35-7.5

6SBG

M8
M8/H
M8/S

L2-6S/8
L3-6S/8
L4-6S/8
L10-6S/8

Q2-6/8
Q3-6/8
Q4-6/8
Q10-6/8

D10-6S/8

GD



Fuse Type Terminal

J42-4RD
72.5/8.2/56
800
6.3
4
0.2-4
0.2-4
M3
0.5-0.8
8

Type

G32-15
TH35-7.5

-

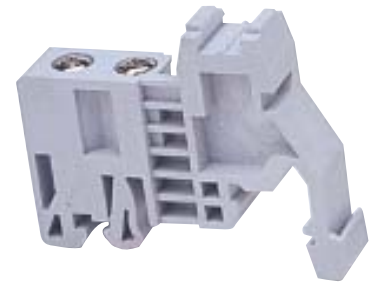
M8
M8/H
M8/S

-

Q2-6/8
Q3-6/8
Q4-6/8
Q10-6/8

-

GD



End fixing

GD
43.5/9.5/35.5



Label terminal

J42-B
42.7/20/43.8

萬力達電業有限公司

地址:桃園市蘆竹區南崁路二段57號

電話:03-217-7145 ,03-312-0166

傳真:03-321-7242 ,03-212-7160

<http://www.onelitter.com.tw>

Email:onelitter1429@outlook.com